

**FORT HOOD GROUNDS MAINTENANCE SERVICE
RFP # W91151-19-R-0005**

**IF YOU DON'T BID YOU DON'T WIN
EXISTING CONTRACT & RFP BRIEFING NUMBER 010**

SMALL BUSINESS SET-ASIDE

**Opportunity Knocks...16 February 2020 Report using All Source
Data:**

Original Published Date: Feb 7, 2019 3:36 pm CST

DUE DATE 09 March 2020, 1pm CST

QUESTIONS DUE 24 February 2020, 12pm CST

submitted by email to:

Mrs. Fredicinda Jones at fredicinda.d.jones.civ@mail.mil, CPT
Ena Baran at ena.g.baran.mil@mail.mil and Mrs. Sharon V. Jones at sharon.v.jones.civ@mail.mil prior to the
closing date and time identified in block 8 of the SF1449.

ProcurementMasters.com

(active link to ProcurementMasters)

www.msblottie.com

Procurement & Business Consulting Professional Service

Over 5600 Jobs Created, and over 7 Billion Dollars in Contract Awards

Mark S. Blottie

SDVOB, SB

7777 N. Wickham Rd #12-504

Melbourne, Florida 32940

DUNS: 071016674

(321) 698-5314

msblottie@gmail.com



FORT HOOD GROUNDS MAINTENANCE SERVICE
RFP # W91151-19-R-0005

Contents

DETAILS AND ESTIMATES: 3

SERVICES LOCATION OVERVIEW: 4

GOVERNMENT STAFFING DISCLOSURE: 7

PRODUCTION RATE ANALYSIS AND WAGE AND BENEFIT BREAKDOWN: 7

PRS 8

ANTICIPATED GOVERNMENT FURNISHED FACILITIES BREAKDOWN: 9

PREVIOUS QUESTIONS AND GOVERNMENT ANSWERS: 10

CONTRACT WORK ESTIMATION ACTION TITLES FOR PROPOSAL: 22

ESTIMATED PROPOSAL VALUE: 22

SAMPLE BOE WORK (1 service Location Only): 24

BIO AS FOUND AT MSBLOTTIE.COM (2017) 29

**FORT HOOD GROUNDS MAINTENANCE SERVICE
RFP # W91151-19-R-0005**

DETAILS AND ESTIMATES:

Funding & Awarding Agency	AMC, ACC, MISSION & INSTALLATION CONTRACTING COMMAND, 418TH CSB
Last Awarded Vendor	Professional Contract Services, Inc and a Period of Performance) PoP with Aquarius Contractors, Inc – mixed up ownership records – Aquarius appears to be 8a sole source
Major Program	S208 - HOUSEKEEPING- LANDSCAPING/GROUNDSKEEPING
Contacts	fredicinda.d.jones.civ@mail.mil - Contract Specialist, sharon.v.jones.civ@mail.mil
Original RFP	W9115119R0020, W9127817R0064 (no beta.SAM record)
Contract Number	W9115119C0009, W9127817C0035 (no beta.SAM record)
Award Amount 6 MO	W9115119R0020 \$1,587,201.71
Contract Modifications Made	3 MODS
Reported Paid (3 YEAR)	\$6,574,114.34 W9127817C0035
6 MONTH VALUE	\$1,587,201.71 W9115119C0009
Monthly Payments	\$174,780.71 (possible) W9115119C0009
Bid Bond	NO
Performance Bond	NO
Payment Bond	NO
Estimated Bond	\$0.00
Number of Offers Received	NA
Set Aside	SBA 8a Program for the 6-month sole source (Gap Contract)
Acres in Service Area	3,177.85
Estimated Hard Surface (Other)	TBD
Estimated Airfield Hard Surface	TBD
Site Visit	19 February 2020
Questions	DUE BY 24 February 2020
CBA	No

FORT HOOD GROUNDS MAINTENANCE SERVICE

RFP # W91151-19-R-0005

SERVICES LOCATION OVERVIEW:

In April 2014, the Fort Hood website lists 45,414 assigned soldiers and 8,900 civilian employees with Fort Hood covering 214,000 acres (87,000 ha), making it one of the largest military bases in the world by area.

Service Area:

Technical Exhibit D - Areas and Acreage

AREA	AREA DESCRIPTION	FACILITY TYPE	EPWS CLS	CLIN	ACRES (Single Cut)
1	100 Feet Along Taxiway RGAAF	Airfield	Common Areas	0001 - QMUN	2.82
2	Bldg 90155 RGAAF Terminal	Airfield	Common Areas	0001 - QMUN	10.30
3	Base Operations & Tower RGAAF	Airfield	Common Areas	0001 - QMUN	22.83
5	ASP WFH	Field	Common Areas	0001 - QMUN	60.44
6	East RGAAF & Mohawk Dr	Airfield	Common Areas	0001 - QMUN	44.37
7	Clark Rd WFH Roadside	Field	Common Areas	0001 - QMUN	19.34
8	88000 Bldg, 89000 Bldg & West Tank Destroyer	HQ	Common Areas	0001 - QMUN	67.39
8A	Comanche Circle Area	Field	Common Areas	0001 - QMUN	1.12
8B	Tank Destroyer Road Side	Road Side	Common Areas	0001 - QMUN	1.82
8C	Tank Destroyer Road Side	Road Side	Common Areas	0001 - QMUN	0.97
8D	Tank Destroyer Road Side	Road Side	Common Areas	0001 - QMUN	0.45
8E	Tank Destroyer Road Side	Road Side	Common Areas	0001 - QMUN	0.70
8F	88000 Bldg, 89000 Bldg & West Tank Destroyer	HQ	Common Areas	0001 - QMUN	25.68
8G	Rail Head Operations	Operations Area	Common Areas	0001 - QMUN	21.57
8H	Maintenance Operations	Operations Area	Common Areas	0001 - QMUN	27.49
8J	Clarke Road Side	Road Side	Common Areas	0001 - QMUN	1.61
9	Clear Creek Entrance Area	Field	Common Areas	0001 - QMUN	35.13
10	Field Between ACP 3 & ACP 11	Field	Common Areas	0001 - QMUN	26.57
11	Kouma Village	Field	Common Areas	0001 - QMUN	56.52
12	DPW Area	Office Area/Field	Common Areas	0001 - QMUN	25.39
12B	Demolished Area 4200/4400	Field	Common Areas	0001 - QMUN	73.53
13	Bldg 4501/4510	HQ	Common Areas	0001 - QMUN	14.66
15	Area Around Horsestables	Field	Common Areas	0001 - QMUN	52.96
16	West of T J Mills/Tank Destroyer	Field	Common Areas	0001 - QMUN	27.12
18	Clear Creek/Battalion & DPW 40001	Field	Common Areas	0001 - QMUN	48.81
19	Field South Bldg 28000	Field	Common Areas	0001 - QMUN	24.08
20	Demo 800 Bldg	Field	Common Areas	0001 - QMUN	13.03
21	Demo 300 Bldg	Field	Common Areas	0001 - QMUN	25.57
27	Warrior Way Drive	Field	Common Areas	0001 - QMUN	32.85
28	Entrance to HAAF	Airfield	Common Areas	0001 - QMUN	4.76
29A	HAAF	Airfield	Common Areas	0001 - QMUN	171.70
29B	Murphy Loop/Cobra Loop	Airfield	Common Areas	0001 - QMUN	1.24
29C	HAAF Inside Fence by Buildings	Airfield	Common Areas	0001 - QMUN	14.24
33A	Bldg 1936/1349	Admin/Gen. Purp.	Common Areas	0001 - QMUN	13.19
33B	Field Between Murphy Rd & Ivy Division Rd	Field	Common Areas	0001 - QMUN	36.28
33C	Bldg 22027 & Bldg 22028	HQ	Common Areas	0001 - QMUN	8.59
33D	Murphy Road near Cement Plant	Field	Common Areas	0001 - QMUN	1.97
36000	Bldg 36000	HQ	Common Areas	0001 - QMUN	6.88
ACP 01	T.J. Mills Main & Santa Fe	ACP	High Visibility	0002 - QMUN	25.99
ACP 02	East Gate Tank Destroyer Blvd.	ACP	High Visibility	0002 - QMUN	28.54
ACP 03	Clear Creek Rd	ACP	High Visibility	0002 - QMUN	3.49
ACP 04	Warrior Way & 10th St.	ACP	High Visibility	0002 - QMUN	19.79
ACP 05	East Range Rd	ACP	High Visibility	0002 - QMUN	0.98
ACP 07	West Range Rd	ACP	High Visibility	0002 - QMUN	2.87

FORT HOOD GROUNDS MAINTENANCE SERVICE

RFP # W91151-19-R-0005

Technical Exhibit D - Areas and Acreage

AREA	AREA DESCRIPTION	FACILITY TYPE	EPWS CLS	CLIN	ACRES (Single Cut)
ACP 08	West Tank Destroyer Blvd.	ACP	High Visibility	0002 - QMUN	1.74
ACP 09	Clark Rd. North/South	ACP	High Visibility	0002 - QMUN	9.14
ACP 10	Old Copperas Cove Rd.	ACP	High Visibility	0002 - QMUN	1.27
ACP 11	79th St.	ACP	High Visibility	0002 - QMUN	4.01
ACP 12	Mohawk and Clear Creek	ACP	High Visibility	0002 - QMUN	5.31
ACP 13	HWY 195 Extension	ACP	High Visibility	0002 - QMUN	34.28
AF	Flag Pole @ BLDG 1001	HQ	High Visibility	0002 - QMUN	3.63
AI	Bldgs 113 CDC, 138 & 139	CDC	High Visibility	0002 - QMUN	7.40
AK	RGAAF, Robert Gray Army Airfield	Airfield	Common Areas	0001 - QMUN	292.26
AMA	HAAF, Hood Army Airfield	Airfield	Common Areas	0001 - QMUN	153.16
AMB	HAAF, Hood Army Airfield	Airfield	Common Areas	0001 - QMUN	43.59
AP	Bldg 52024 Chapel and CDC	CDC	High Visibility	0002 - QMUN	7.21
AR	Welcome Center, 69000, 69002, 69004 & 69012	Welcome Center	High Visibility	0002 - QMUN	6.88
AV	4819 & 4820, CDC	CDC	Common Areas	0001 - QMUN	11.44
AW	Bldg 1001 Block	HQ	High Visibility	0002 - QMUN	42.93
AX	Bldg 320, 321 & 333	CDC	High Visibility	0002 - QMUN	10.99
AY	Bldg 70004 Montague Village CDC	CDC	High Visibility	0002 - QMUN	1.95
AZ	Memorial Park @ 1001	Memorial	High Visibility	0002 - QMUN	10.80
BA	Bldg 41015 Clear Creek CDC	CDC	High Visibility	0002 - QMUN	9.97
BB	Bldg 48303 Kouma Village CDC	CDC	High Visibility	0002 - QMUN	3.73
BC	Bldg 52943	CDC	High Visibility	0002 - QMUN	6.10
BD	Bldg 36084 CDC	CDC	High Visibility	0002 - QMUN	0.40
BE	HAAF AMCOM Areas	Airfield	Common Areas	0001 - QMUN	11.52
BF	DPW Bunkers Clark Rd.	Bunkers	Common Areas	0001 - QMUN	12.63
BG	Old Railhead	Railhead	Common Areas	0001 - QMUN	42.59
BYC	Bronco Youth Center	CDC	High Visibility	0002 - QMUN	2.34
CYC	Comanche Youth Center	CDC	High Visibility	0002 - QMUN	1.33
GRC	Outside Fence at Picnic Area	Field	Common Areas	0001 - QMUN	7.45
HCYC	Chaparral Youth Center	CDC	High Visibility	0002 - QMUN	1.04
MYC	Bldg 70020 - Montague SAC	CDC	High Visibility	0002 - QMUN	3.27
RAB	Field SW ACP 5	Field	Common Areas	0001 - QMUN	24.94
SDC	Building 33009	SDC	Common Areas	0001 - QMUN	13.78
SFF	Field South of Bldgs 4617, 4623 & 4619	Field	Common Areas	0001 - QMUN	14.45
SFH	Field West ACP 3	Field	Common Areas	0001 - QMUN	12.38
SGM	Bldg 18000 & Bldg 18010	HQ	High Visibility	0002 - QMUN	7.87
SOW	Demo 200 Blk	Field	Common Areas	0001 - QMUN	5.82
WRA	1st CAV Washrack	Washrack	Common Areas	0001 - QMUN	14.33
WRB	3CR Washrack	Washrack	Common Areas	0001 - QMUN	4.26
GM01	43000 Block	GM Location	Common Areas	0001 - QMUN	22.17
GM02	38000 Block	GM Location	Common Areas	0001 - QMUN	18.03
GM03	35000/32000 Block	GM Location	Common Areas	0001 - QMUN	19.51
GM04	35000/32000 North Ivy Divison	GM Location	Common Areas	0001 - QMUN	23.89
GM05	30000/26000 Block	GM Location	Common Areas	0001 - QMUN	18.62
GM06	DRRF W Murphy Rd	GM Location	Common Areas	0001 - QMUN	33.25

FORT HOOD GROUNDS MAINTENANCE SERVICE

RFP # W91151-19-R-0005

Technical Exhibit D - Areas and Acreage

AREA	AREA DESCRIPTION	FACILITY TYPE	EPWS CLS	CLIN	ACRES (Single Cut)
GM07	25000 Block	GM Location	Common Areas	0001 - QMUN	8.69
GM08	22000 Block	GM Location	Common Areas	0001 - QMUN	22.08
GM09	2000/19000 Block	GM Location	Common Areas	0001 - QMUN	12.05
GM10	Rod and Gun Club LP	GM Location	Common Areas	0001 - QMUN	38.07
GM11	17000/15000 Block	GM Location	Common Areas	0001 - QMUN	12.67
GM12	13000/11000 Block	GM Location	Common Areas	0001 - QMUN	13.09
GM13	13000 Block North Ivy Division	GM Location	Common Areas	0001 - QMUN	19.27
GM14	11000/9000 Block	GM Location	Common Areas	0001 - QMUN	28.04
GM15	9500 Block	GM Location	Common Areas	0001 - QMUN	17.79
GM16	Lightning Ranch/Tedesco Way	GM Location	Common Areas	0001 - QMUN	86.79
GM17	HAAF	GM Location	Common Areas	0001 - QMUN	42.15
GM18	87000 Block	GM Location	Common Areas	0001 - QMUN	28.23
GM19	9400 Block	GM Location	Common Areas	0001 - QMUN	33.64
GM20	9200 Block	GM Location	Common Areas	0001 - QMUN	15.71
GM21	10000 Block 21st	GM Location	Common Areas	0001 - QMUN	26.62
GM22	10000 Block 31st	GM Location	Common Areas	0001 - QMUN	16.69
GM23	12000 Block	GM Location	Common Areas	0001 - QMUN	14.04
GM24	14000 Block	GM Location	Common Areas	0001 - QMUN	16.63
GM25	16000 Block	GM Location	Common Areas	0001 - QMUN	13.94
GM26	18000 Block	GM Location	Common Areas	0001 - QMUN	11.81
GM27	21000 Block	GM Location	Common Areas	0001 - QMUN	12.89
GM28	24000 Block	GM Location	Common Areas	0001 - QMUN	8.83
GM29	27000 Block	GM Location	Common Areas	0001 - QMUN	13.73
GM30	29000 Block	GM Location	Common Areas	0001 - QMUN	14.76
GM31	Building 31014	GM Location	Common Areas	0001 - QMUN	13.47
GM32	34000 Block	GM Location	Common Areas	0001 - QMUN	19.91
GM33	37000 Block	GM Location	Common Areas	0001 - QMUN	13.76
GM34	41000 Block	GM Location	Common Areas	0001 - QMUN	20.03
GM35	DPW/SDC Area	GM Location	Common Areas	0001 - QMUN	53.62
GM36	39000/2800 Block	GM Location	Common Areas	0001 - QMUN	60.35
GM37	2200 Block	GM Location	Common Areas	0001 - QMUN	12.34
GM38	Rivers Building Block	GM Location	Common Areas	0001 - QMUN	11.97
GM39	NEC/Community Center	GM Location	Common Areas	0001 - QMUN	19.5
GM40	Backside of Horse Stables	GM Location	Common Areas	0001 - QMUN	18.98
GM41	Tank Destroyer 3800 Block	GM Location	Common Areas	0001 - QMUN	32.29
GM42	5000 Block	GM Location	Common Areas	0001 - QMUN	7.25
GM43	91000/90000 Block	GM Location	Common Areas	0001 - QMUN	97.19
GM44	Grey Eagle Road	GM Location	Common Areas	0001 - QMUN	60.16
GM45	North Rd	GM Location	Common Areas	0001 - QMUN	18.98
GM46	Area Above MYC/Bldg 76020	GM Location	Common Areas	0001 - QMUN	6.78
GM48	WFH Bldg 92087	GM Location	Common Areas	0001 - QMUN	1.87
GM410	DIV West	HQ	High Visibility	0002 - QMUN	15.88
GM2218	1st CAV Museum	Museum	High Visibility	0002 - QMUN	8.2
GM6815	Dog Park	GM Location	Common Areas	0001 - QMUN	2.94

Technical Exhibit D - Areas and Acreage

AREA	AREA DESCRIPTION	FACILITY TYPE	EPWS CLS	CLIN	ACRES (Single Cut)
GM9406	Ohana Chapel	Chapel	High Visibility	0002 - QMUN	0.55
GM10041	4ID Chapel	Chapel	High Visibility	0002 - QMUN	0.84
GM12012	2AD Memorial Chapel	Chapel	High Visibility	0002 - QMUN	0.55
GM22041	Training/Admin.	GM Location	Common Areas	0001 - QMUN	4.33
GM22044	Training Facility	GM Location	Common Areas	0001 - QMUN	27.62
GM24008	Red Team Chapel	Chapel	High Visibility	0002 - QMUN	0.73
GM28000	Cooper Field	HQ	High Visibility	0002 - QMUN	13.93
GM31001	1CD Memorial Chapel	Chapel	High Visibility	0002 - QMUN	1.2
GM39009	13th CMD Memorial	Memorial	High Visibility	0002 - QMUN	1.3
GM56164	AHA	GM Location	Common Areas	0001 - QMUN	11.93
GM91074	WFH Chapel	Chapel	High Visibility	0002 - QMUN	1.9
TOTAL					3,177.85

Quality maps are provided in the solicitation files.

**FORT HOOD GROUNDS MAINTENANCE SERVICE
RFP # W91151-19-R-0005**

Other Available Data:

2009 and 2010 complete proposal work (Price was 10K over award amount), Performance on this bid was an award issue.

GOVERNMENT STAFFING DISCLOSURE:

45,414 Soldiers

8,900 Civilians

PRODUCTION RATE ANALYSIS AND WAGE AND BENEFIT BREAKDOWN:

10 Holidays (80 hours)

80 Hours average Vacation projections

56 Hours Sick Leave

(1,864 Hours annual productive time rate)

NO CBA

**FORT HOOD GROUNDS MAINTENANCE SERVICE
RFP # W91151-19-R-0005**

PRS

**PERFORMANCE REQUIREMENTS
SUMMARY**

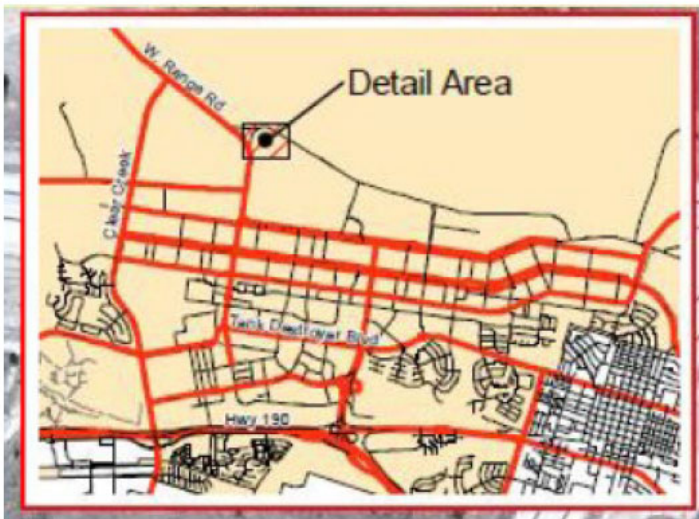
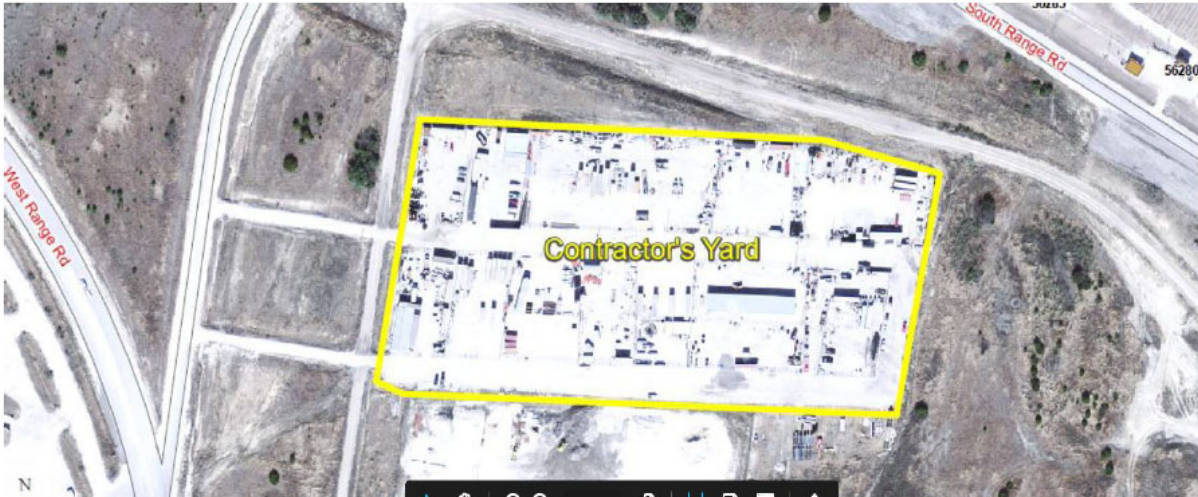
- Performance Standard: Level of performance required to meet the Performance Objective
- Acceptable Quality Level (AQL): The AQL is the maximum percent defective (or the number of defects per hundred units) for the purposes of sampling inspection can be considered satisfactory.

Required Services	Performance Standard	Acceptable Quality Level (AQL)	Method of Surveillance
Mowing and Trimming – High Visibility and Common Areas	Height requirement, trash clean up, mechanical trimming & edging.	100%	Periodic inspections, random sampling, validated customer input inspections, and one hundred percent (100%) inspection.
Airfield Mowing and Chemical Sterilant	Provide chemical trimming services to fence lines, runways and taxiways on RGAAF/HAAF. Include mechanical trimming as required for removal of dead grass and additional debris.	100%	Periodic inspections, random sampling, validated customer input inspections, and one hundred percent (100%) inspection.
Chemical Sterilant Spraying Service	Provide chemical spraying and trimming to specified areas. Include mechanical trimming as required for removal of dead grass and additional debris.	100%	Periodic inspections, random sampling, validated customer input inspections, and one hundred percent (100%) inspection.
Contractor Manpower Reporting Application (CMRA)	Provide report for all contractor manpower.	100%	Periodic inspections, random sampling, validated customer input inspections, and one hundred percent (100%) inspection.

Monthly Payment deductions will be made for acreage not in compliance with PWS mowing standards. The following formulas will be used to calculate the payment deductions:

**FORT HOOD GROUNDS MAINTENANCE SERVICE
RFP # W91151-19-R-0005**

ANTICIPATED GOVERNMENT FURNISHED FACILITIES BREAKDOWN:



**FORT HOOD GROUNDS MAINTENANCE SERVICE
RFP # W91151-19-R-0005**

PREVIOUS QUESTIONS AND GOVERNMENT ANSWERS:

This list was for the contract ending in 2015

Q1 Is the present contract the same in scope and acreage as the RFP?

A1 Yes

Q2. Has FT HOOD ever ordered the maximum 95,000 acres per year? If so, What percentage of the 95,000 acres was ordered in the past?

A2 No, either due to funding or weather we have not ordered the maximum estimated acreage. The fourth option year we ordered 80,219 acres for the year which is approximately 84%. The estimated acreage allows us the flexibility to add new areas to the contract as Fort Hood continues to grow.

Q3 In section C.5. of the PWS, the government provided a mowing heights of 2 ½ inches and a height of 3 ½ inches plus or minus a ½ inch for both. It is relatively understandable that the 2 ½ height is for fine turf (imp-grounds) what are actual acres for these areas at each mowing height.

A3 The 3 ½ inch requirement in paragraph C.5.3 is referring to the two airfields under TE-B. Areas AK (Robert Gray Army Air Field, RGAAF) and AM (Hood Army Airfield, HAAF) are cut once a month for ten months. AK is listed with 370 acres per cut and AM is listed with 126 acres per cut. All other areas should be maintained at the 2 ½ inch requirement.

Q4 Per C.5.2.2, Chemical Trimming Service, how many square feet or acres of landscape rock areas (i.e. around buildings and motor pool areas) are there?

A4 There is approximately 150 acres of landscape rock areas around motor pools that will need to be maintained.

Q5 Paragraph C.5.2.2. the government requires landscape rocked areas to be chemically treated to control vegetation. Can the government please provide a measurement/quantity of all these areas combined so that it be priced appropriately? A listing of the building with these landscaped rocked beds would also be useful. When performing chemical trimming will the government allow the contractor to trim spray around fix obstacles out in the turf areas such as electric poles, guy wires, phone or cable boxes, sign post, etc that are not in high visible areas. It was also noticed there are area where small drainage ditches are located where mowing

FORT HOOD GROUNDS MAINTENANCE SERVICE
RFP # W91151-19-R-0005

equipment cannot access due of obstacles. Will the government allow the contractor to use an aquatic chemical in these areas to control vegetation growth?

A5 The majority of the landscape rock that will have to be maintained is around the motor pool areas. The measurement of these areas is as stated in the answer for question 4. Chemical trimming around obstacles can be approved by the Contracting Officer Representative, but we prefer mechanical trimming over chemical trimming because in the populated areas because of the appearance mechanical trimming. The Contractor may use any herbicide that is approved through our environmental department.

Q6 Per C.5.2.4, Mechanical Edging Service, and how many linear feet of edging is there?

A6 We have approximately 250,000 linear feet along curb, sidewalks, driveways, concrete ditch liners, etc on Fort Hood.

Q7 Per C.5.3.2, Building 1001 Weeding Service, how many acres or square feet of planter beds are there?

A7 On the site visit we walked from the north side of building 1001 to the south side to show the shrub beds that are to be maintained on this contract. We do not have an exact measurement, but it is about 500 sq feet.

Q8 Section C.5.3.2. states no power equipment may be used in plant beds. Please explain the government's intent of no power equipment. For example gas hedge trimmers are commonly used for pruning plants/shrubs in landscaped beds.

Q8 This section refers to hand pulling weeds from the weed beds and not using a mechanical trimmer. A mechanical hedge trimmer is ok to use for pruning the shrubs.

Q9 Q5 Per C.5.3.3, Building 1001 Trimming Service, how many shrubs are there requiring pruning?

A9 There are approximately 100 shrubs that were pointed out during the site visit.

Q10 Section C.5.3.3. requires form TE-F to be filled out and submitted to COR for review and acceptance. We were unable to find form TE-F. Please clarify.

A10 TE-F is the shrub bed map for building 1001 and can be provided if it wasn't in the solicitation. Paragraph 5.3.3. is asking for a schedule "detailing the dates of service and the name of employees performing trimming services in the area shown in TE-F COR for review and acceptance."

Q11 C.5.4 indicates 3 ½ mowing height is this a rough cut (semi-imp grounds) it indicates there are two Airfields and we are assuming that this area would be cut with Tractors and Bat

FORT HOOD GROUNDS MAINTENANCE SERVICE
RFP # W91151-19-R-0005

Wing mowers, what is the total acreage of the 3 ½ inch height per and events/cycles and annually.

A11 Tractor with a batwing mower is the vehicle that is used to maintain the larger areas, but small mowers and trimmers are used to maintain areas the tractors cannot get close to. Such as poles, lights, transformers, fence lines and other obstacles.

Q12 C.5.4.1. RGAAF AND HAAF air field mowing is identified as provided in TE-E. TE-E could not be found among the solicitation documents. The government requires the airfield be mowed to a height of 3 ½ inches at an interval of once a month. Our company is accustomed to using Bat Wing mowers on the flight line areas. If Bat wings are placed that low a great dealing of thatching occurs when grass is tall. Also, scalping will occur on un-level ground. Is this acceptable to the government? Please clarify the government's reason to cutting the flightline areas so low ?

A12 TE-E is the large mowing map that was shown in the conference room during the site visit and was part of the solicitation package. The question during the site visit was could this map be reproduced in a larger form. Some of the Contractors Kinko's could reproduce it larger. The two airfields are identified on this map and in TE B as AK (Robert Gray Army Airfield, WFH) and AM (Hood Army Airfield, east end of Fort Hood). Tractors with batwing mowers are currently being used to mow these areas and scalping in these areas are not a major concern because of the visibility. The 3 ½ inch height requirement is recommend by the airfield and due to the once a month mowing frequency.

Q13 PWS C5.5; Does this refer to trash etc produced by the contractor

A13 This paragraph is referencing two things, the debris that is produced at the Contractor's yard and the debris that is pick up during the mowing service. A dumpster is not provided for the Contractor under this contract at the Contractor's yard. The Contractor may acquire and pay for refuse collection services if they should choose to. Trash debris pick up during mowing services can be discarded in dumpsters in the areas they are working. Wood debris must be taken to the Compost Yard at the Fort Hood Landfill at no expense to the Contractor other than transportation of the debris.

Q14 Per C.5.5, Cleaning and Waste Removal:

- i) Is litter/debris removal only required where services are performed or for the entire base?
- ii) Is litter/debris removal only required prior to mowing services, or daily, or weekly?

A14 See Answer 13

FORT HOOD GROUNDS MAINTENANCE SERVICE
RFP # W91151-19-R-0005

Q15 C.5.6.3. Irrigation systems. Who operate the installations irrigation systems. How many irrigation systems are there in the areas within the contract? These irrigation system should be part of the grounds maintenance contract. This would allow for the integration of mowing cycles/schedules with irrigation timers and reduce mowing delays.

A15 There are approximately 20 buildings with irrigation systems are currently being maintained by DPW Maintenance. The irrigation systems are adjusted with the schedule the buildings are cut and can be changed if needed.

Q16 In TE A, Page 1, the total acreage appears to be 2,975 and not the 3,373 shown as the total. Please clarify.

A16 Not sure what TE A you are looking at, but the total acreage is 3,373.

Q17 Technical Exhibit A; What frequency / how many cycles are these areas mown in one calendar year?

A17 The second page of TE A explains the estimated schedule, but this is a simple breakdown:

Jan 0 Cycles	Jul 2 Cycles (15 day cycles)
Feb 0 Cycles	Aug 2 Cycles (15 day cycles)
Mar 2 Cycles (15 day cycles)	Sep 3 Cycles (10 day cycles)
Apr 3 Cycles (10 day cycles)	Oct 2 Cycles (15 day cycles)
May 3 Cycles (10 day cycles)	Nov 2 Cycles (15 Day cycles)
Jun 2 Cycles (15 day cycles)	Dec 1 Cycle (20 day cycle)

Q18 In TE B, no specific frequency for cutting is specified, although there are suggestions, "(For Example: Once a week mowing.)" and "Areas labeled AK (RGAAF) and AM (HAAF). These areas are typically mowed once a month." PWS Paragraph 5.1 says that cutting frequencies are provided in TE A and TE B. Would you please clarify this requirement.

A18 Areas in TE A are cut 22 times a year. Areas listed in TE B excluding AK and AM are typically mowed once a week. Areas AK and AM are mowed once a month. These are estimated quantities and can change due to weather and funding.

Q19 Could you please provide some insight into the CLIN xxx1 acreage quantity of 95,000 acres because TE A areas will be cut at a different rate than TE B areas.

A19 The 95,000 acres is a combination of the acreage and frequencies of mowing for TE A and TE B plus some extra acreage for new areas or extra mowing that might be needed.

FORT HOOD GROUNDS MAINTENANCE SERVICE
RFP # W91151-19-R-0005

Q20 Is the acreage on TE B-1 included in the acreage on TE A-1?

A20 No, the acreage in both TEs are separate.

Q21 Is TE F-1 included for the purpose of the maintenance only of the III Corps and FT. Hood Headquarters Building?

A21 TE F shows the Shrubs that need to be maintained at Bldg 1001.

Q22 What is the fee schedule for taking litter, debris, pruned material to the landfill and compost sites? (i.e. \$/cy, \$/ton?)

A22 There is no fee to take materials to the landfill or compost site.

Q23 Per the site visit, we were instructed that the control tower will supply radios and headsets to the contractor's employees while working on the airfields. Is this correct?

A23 This is correct.

Q24 Can weed chemicals be stored and mixed on base?

A24 Yes

Q25 Can any equipment (i.e. tractor/hog) be left up at North Fort Hood overnight, if mowing operations are not completed in 1 day?

A25 Yes, but we do not have a contractor yard established to store equipment.

Q26 Are there contractor yard facilities available @ West Fort Hood yard? Is there any charge for use of those facilities?

A26 We currently do not have a contractor's yard established at WFH.

Q27 What is the formula used to get the total of 95,000 acres on the overall contract?

A27 See Answer 19

Q28 On the West Ft. Hood map, please clarify where areas 3, 6 and AK are.

A28 Area 3 is the brown area between 2 and 4. Area 6 is on the red east side of RGAAF. AK is the area that is checkered between areas 2, 3, 4 and area 6.

Q29 How far does area 7 continue on the West Ft. Hood map?

A29 Area 7 goes from the area by Highway 190 and goes south along Clark Rd to area 5 and 6.

Q30 I had the map of Ft. Hood in the bid packet enlarged, please clarify the gold, orange, solid black and patch black areas. The map shows AK on the north end of the patch black and

FORT HOOD GROUNDS MAINTENANCE SERVICE
RFP # W91151-19-R-0005

also on the white area south of the solid black area. The orange area on the north side and the gold area to the west side of the runway have no area numbers on them.

Q30 See Answer 28

Q31 Is the area colored in pink west of area AV, area 11?

A31 Yes

Q32 Is the area colored in yellow south of US Bus. 190 included in area 25?

A32 Yes

Q33 What is the largest size of equipment allowed on this project? For example 80-100 hp. tractors and 15-20' batwing shredders for the larger more open areas?

A33 That equipment is acceptable and is currently being used on the contract.

Q34 Please identify the frequency of mowing for each of the areas identified on the color coded map.

A34 The colored areas labeled with numbers are mowed 22 times a year and the areas labeled with letters (example AA, AB etc.) are mowed once a week except AK and AM which are mowed once a month. This is based off weather and funding.

Q35 Are the annual acres for mowing guaranteed or will the Government be issuing work orders for mowing and trimming services as they see necessary for mowing and trimming to be performed?

A35 The quantities are estimated and are ordered on a Delivery Order. Weather and funding does play a part in what is ordered on a Delivery Order.

Q36 How are we to price CLIN xxx1 to give an acre price for the 95,000 acres, considering the different types of mowing, intensity of effort and varying equipment prices associated with different type of mowing?

A36 We expect the same quality of mowing post wide and the only difference in areas is the frequency of the cut.

Q37 Who is responsible for policing Fort Hood for the purpose of collecting trash?

A37 When the Contractor is mowing an area he is responsible for policing the area of trash, debris, limbs, etc.

Q38 Who is responsible for pruning trees at Fort Hood?

A38 DPW has a maintenance crew who is currently pruning the trees and shrubs.

FORT HOOD GROUNDS MAINTENANCE SERVICE
RFP # W91151-19-R-0005

Q39 Who is responsible at Fort Hood for pruning shrubs other than those at Bldg 1001, HQ 3 Corp?

A39 See Answer 38

Q40 During the site visit several trucks owned by Tru Green were observed. What is their role at Fort Hood? Are they employed by the incumbent as a sub-contractor for grounds maintenance?

A40 They are a sub contractor for the housing contractor to mow areas in the housing areas.

Q41 At what frequency are fence-lines chemically trimmed on the airfields?

A41 To prevent vegetation growing in our fence lines in our mowing areas the contractor can mechanically or chemically maintain them. He has the option to what method he chooses in order to meet the contract requirement.

Q42 Due to the flying program and size of task involved with chemical trimming on the airfields, and runway and taxiway crack weed control, will we be able to work weekends?

A42 Working after hours is approved through the KO and is usually approved.

Q43 Are we correct in understanding chemical trimming to include the entire base – parking lots, motor pools, sidewalks, roads and rock beds?

A43 Chemical trimming is used in support of mechanical trimming to meet the standards of the contract. The contractor has the option to get rid of any unwanted vegetation in the manner he chooses.

Q44 Are there any Government furnished diesel and gas tanks?

A44 No, the contractor must supply his own fuel tanks for the contract. The current contractor has his own tanks, pumps and spill containment to fuel his equipment.

Q45 Can we store and mix pesticides on base?

A45 Yes

Q46 Is there a location we can leave airfield mowing equipment on or near the airfields when performing this task?

A46 No equipment can be left on the airfield unattended and currently we do not have a site near the airfields to store contractor's equipment.

Q47 Are there any staging areas around the base we can leave larger pieces of mowing equipment at COB each day?

FORT HOOD GROUNDS MAINTENANCE SERVICE
RFP # W91151-19-R-0005

A47 Currently we do not have any staging areas located around Fort Hood for contractor's equipment. It would not be advisable to leave any equipment in an unsecure area.

Q48 Can we get separate maps for the different area of grounds maintenance?

A48 When the contract is awarded we will provide the contractor with maps.

Q49 CLIN 0001 indicates 95,000 acres with a performance period of 1 to be maintained. Technical Exhibit A provides a breakdown of 33 areas with associated acreages for each area totaling 3,373 acres. If we divide the 95,000 by 3,373 it equates to 28 events/mowing cycles annually. Is 28 cycles the correct breakdown for the acreage provided in this exhibit for mowing cycles. What are the governments desired mowing heights for each area?

A49 See Answer 19 for the acreage breakdown. Areas on the airfield (AK & AM) are to be maintained at the 3 ½ inch requirement and all other areas at the 2 ½ inch requirement.

Q50 CLIN 0002 provides the services associated to PWS section C. 5. 3., Bldg 1001, are there any other areas/bldg's that require similar services as building 1001 not identified in the solicitation?

A50 No, this is the only building that these services are required.

Q51 CLIN 0004, Section C. 5. 4. 2 PWS, identifies chemical trimming service requirements. The government provided a total of 350,000 linear footage for both airfields. Please confirm the airfields are the only areas in this solicitation that the government requires the contractor to apply herbicide in controlling crack grass and trimming control. Is the contractor allowed to store and mix the needed herbicide chemicals on base? if so what are requirements does the government require to meet environmental specifications on Fort Hood.

A51 The areas specified in this paragraph are billed under a separate CLIN and are performed at the request of the government (3 times a year if weather and funding permit). The contractor shall use herbicide with mechanical trimming to control unwanted vegetation in other areas and should be part of his CLIN 0001 price. Yes the contractor can store and mix chemicals on Fort Hood. The contractor must receive approval through our environmental department using TE G Hazardous Material Authorization Request to use any hazardous material on Fort Hood..

Q52 Information concerning services at bldg 1001 is confusing. Please confirm the break out of acres and what areas are to be performed weekly on Tuesdays. Please confirm the mowing height to be 2 ½ inches. How many events/cycles do you intend/desire to happen at this bldg annually. What is the total acreage at this facility.

A52 Building 1001 acreage is referenced in TE B as area AW (44 acres). This area requires once a week mowing (depending on weather and funding) performed by Tuesday of each week

FORT HOOD GROUNDS MAINTENANCE SERVICE
RFP # W91151-19-R-0005

unless it has to be rescheduled for a ceremony or an event. This area shall be maintained at the 2 ½ inch requirement.

Q53 We understand from the information provided that 496 acres comprise two Airfields. Airfields are typically mowed to maintain BASH height standards. This typically equates to a mow once a month. Can the government please confirm the mowing height for the airfield.. Please confirm what areas of this contract where the contractor typically would use Tractors with Bat Wing mowers?

A53 The areas that are labeled AK and AM in TE B are usually once a month mowing at the 3 ½ inch requirement. There are other areas on the airfields that will fall under Cyclic mowing in TE A (Example, part of area 29) that require more frequent mowing and at the 2 ½ inch requirement. These areas can be mowed with a tractor and batwing mower, but the areas around the poles, transformers, lights and other obstacles will need to be maintained by smaller mowers and trimmers. Some obstacles can also be maintained by herbicide.

Q54 Does the government require the contractor to complete flight line driver/operation classes to drive or operate equipment on the Flight Line areas. If so will the government provide this training?

A54 This will be a requirement by the airfield personnel and training/testing will be provided by them.

Q56 Contractor Yard: is the contractor allowed to install bulk storage fuel tanks the staging yard to support fueling of equipment? The base storage yard size is inadequate to house the anticipated amount of equipment to support the large amount of mowing operations. Can the contractor be provided additional space if needed

A56 The contractor is allowed to install bulk fuel storage tanks if the meet the standards. If the yard is inadequate to house the contractor's equipment to perform the work additional space may be acquired. It may not be in the same location and may require the contractor to develop the area to store his equipment (Install a fence, hardstand surface, etc.).

Q57 Are there any mowing time stipulations for performing grounds maintenance services at the Child Development Center.

A57 Once you start, complete the area as soon as possible. Child Development Centers are requested to move the children inside before work commences and should not be let back out to the yards till the work is completed.

Q58 Appendix A Areas 1, 3, 6, & 11 are not indicated on your Maps. ** Appendix B Areas AC, & AO are not indicated on your Maps. Please clarify.

FORT HOOD GROUNDS MAINTENANCE SERVICE
RFP # W91151-19-R-0005

A58 Area 1 is all of North Fort Hood that is colored blue. Area 3 is the brown area between 2 and 4. Area 6 is on the red east side of RGAAF. AK is the area that is checkered between areas 2, 3, 4 and area 6. AC is the Division West HQ (Bldg 410, old 4th ID HQ) and Museum next to it.

AO is a Chapel (Bldg 39010).

Q59 The North Fort Hood Map has no scale or legend. We estimate the North Ft Areas to be about 350 acres. Please confirm the number of acres associated with North Ft Hood.

A59 North Fort Hood is Area 1 in TE A and the acreage is 398.

Q60 We ask the solicitation be modified to allow the winning bidder to provide Chemical applicator licensing to avoid the expense of obtaining a Texas State license. We spoke with the Texas Department of Agriculture and they indicated there they would provide documentation to Fort Hood verifying reciprocal agreement between the State of Texas and our company's state of licensing.

A60 This is the answer I received back from our Herbicide expert at DPW Natural Resources.

The contract licensing requirement needs to stay as it is. It is true that TDA has reciprocal agreements with several states but that just means that the contractor can get the Texas license somewhat easier and with less of the testing.

Q61 An observation that is not a question and does not require a response: I could not find a reasonable combination of TE B cuts that, when added to the TE A cuts, totaled 95,000 acres for the year.

A61 The 95,000 acres is a combination of the acreage and frequencies of mowing for TE A and TE B plus some extra acreage for new areas or extra mowing that might be needed.

Q62 Are there any scope changes from the previous award?

A62 There are a few minor changes but nothing significant.

Contract Related Questions

Q1 Will we be able to utilize H2B visa employees on base.

A1 You must adhere to FAR Clause 52.222-54, which will be added to the solicitation in this amendment.

FORT HOOD GROUNDS MAINTENANCE SERVICE
RFP # W91151-19-R-0005

Q2 What was the past award value for this contract? Are there any scope changes from the previous award?

A2 \$1,267,758, No significant changes noted.

Q3 What will the Payment schedule be? Are there any significant dates relative to invoicing (for example, all invoices are processed on the 20th of the month, etc.)?

A3 Payments will be in accordance with CLIN structure per task order. For example: A task order for one cycle of CLIN 0004, you would invoice WAWF after completion of one cycle.

Q4 Amendment 0001 shows two proposal submission addresses. One to the physical address of the contracting officer at Fort Hood. The other via e-mail to ASFI address. Where and how do we send our proposal documentation?

A4 You will submit your entire proposal through the government point of entry, which is ASFI. No hard copy or emailed documents will be accepted. This amendment revised the wording in section L to reflect the only acceptable method of proposal submission.

Q5 What is meant by the requirement to submit “an original signature” on the SF1449? We ask because if the SF1449 is to be submitted electronically that would mean a scanned copy of the SF1449 would have to be sent, complete with scanned signature. Please advise.

A5 Sign the face of the SF1449 and scan into ASFI following all instructions in section L.

Q6 Proposal Preparation Instructions. At the time we submit our proposal what are we entering for ‘TAB D’ of the Section II – Contract / Price instruction?

A6 You will fill out attachment 0003 and submit under the label Tab D. These instructions have been added to section L under this amendment.

Q7 Is Jan 1, 2010 a realistic start date for this contract, or do the Government expect this to be pushed back?

A7 The new performance start date is 1 April 2010.

FORT HOOD GROUNDS MAINTENANCE SERVICE
RFP # W91151-19-R-0005

Q8 Please identify the current contractor(s) performing grounds maintenance services at Ft Hood. What is the current value of the last full contract year of the grounds maintenance contract(s)

A8 Wimsco Inc is the current contractor. The current value of the last full option year was \$1,246,928.

Q9 In the solicitation the government provides page/sheet marked as Attachment 3 Baseline Data. Please confirm this is related to Manpower Reporting. Our company presently provide providing manpower reports on line. Can you please explain the purpose of Attachment 3. Is there a different manpower reporting system at Ft Hood.

A9 This is not related to Manpower Reporting. This is baseline staffing that you must provide in order to facilitate the requirements of FAR Clause 52.222-43. These instruction have been included in section L of this amendment.

**FORT HOOD GROUNDS MAINTENANCE SERVICE
RFP # W91151-19-R-0005**

CONTRACT WORK ESTIMATION ACTION TITLES FOR PROPOSAL:

- 143 Pages of Turf and Grounds used to identify Grounds operations (by service location) for workload estimations.
- 35 Pages of Tree and Shrub inventory by service location for evaluation and workload estimations
- Vehicle Fleet Analysis
- Equipment Analysis
- Vendor Quotes and Analysis
- Proposal Outline Prep (Compliance Matrix)
- Technical Content
- Technical content coordination with all Team members
- Comprehensive Basis of Estimate by Task for each location – see sample BOE below as used for an AFB in 2018 as a sample of the work you can expect for internal evaluation.
- Coordination of JV or Team Agreements along with insuring proper PPQ, Banking, ACORD Form, EMR Rating Data, and OSHA Safety calculations.
- Conversion of all Resume files to a single approved format
- Letters of Commitment
- Vendor quote coordination and initial agreements
- Assistance in identifying reputable Factoring Companies and or Venture Capital
- Identify (BOE) and obtain Equipment and Vehicle Cost Quotes

ESTIMATED PROPOSAL VALUE:

Fixed Fee (NEGOTIABLE) 2 payment approach:

\$4,000.00-dollar Value \$2,000.00 DOLLAR RETAINER

\$2,000.00 DOLLAR FINAL WITH PROPOSAL SUBMISSION

FORT HOOD GROUNDS MAINTENANCE SERVICE
RFP # W91151-19-R-0005

FORT HOOD GROUNDS MAINTENANCE SERVICE
RFP # W91151-19-R-0005

SAMPLE BOE WORK (1 service Location Only):

DESCRIPTION	EST QTY	UNIT	TASK	CRITERIA	PWS	PRODUCTIO N RATE	HRS PER SVC	EST SVC QTY	TOTAL HOURS	% WORKLOA D	LABOR	EQUIPMEN T	COMMENT
Improved Grounds Mowing Growing	181	Acres	MOW	2-4" HEIGHT	1.1.1	2.1	86.19	36.00	3102.84	0.1619	Labor Grounds Maintenance	60-72" MOWING SYSTEM	
at mowing height-Growing			TRIM	2-4"	1.1.3	600	72.60	36.00	2613.60	0.1364	Labor Grounds Maintenance	ECHO TRIMMER	
1 TIME PER YEAR- EARLY SPRING	181	Acres	AERATION	soil plugs at a minimum of 4 inches deep and 2-3 inches apart.	1.1.8.2	8	22.63	1.00	22.63	0.0012	TRACTOR	John Deere	Rental of Aerator Impliment
Debris clean up from storms and debris cleanup from Air Shows, etc. GROWING	3	EA	EMERGENCY & SPECIAL EVENTS NO LINE ITEM, WO issued	8HR EVENTS	1.8.2	1	8.00	3.00	24.00	0.0013	Labor	Truck, Bags, Hand Tools, Chain Saws	Storm debris and Air Shows events most likely
Rotary mowing system is acceptable. Falcon Field is one Baseball Stadium- Estimating 6 Fields for service GROWING	22	Acres	BALL FIELDS NO LINE ITEM	Improved	1.8.6	1	22.00	36.00	792.00	0.0413	Labor Grounds Maintenance	60-72" MOWING SYSTEM	
Improved Grounds (PAVEMENT/SIDEWALKS, DRIVEWAYS, etc.	4100	SY	ALL OTHER, ROUNDUP	CRACK GRASS REMOVAL	1.1.4	450	16.00	12.00	192.00	0.0100	LIC PEST-OBSERVER IN FL	BACKPACK SPRAYER AND ROUNDUP	
Improved Edging GROWING	37,000	LF	EDGE	1/2" FROM EDGE	1.1.2	1000	37.00	26.00	962.00	0.0502	Labor Grounds Maintenance	ECHO STICK EDGER	

FORT HOOD GROUNDS MAINTENANCE SERVICE
RFP # W91151-19-R-0005

Improved Grounds Mowing Non-Growing	181	Acres	MOW	2-4" HEIGHT	1.1.1	2.1	86.19	6.00	517.14	0.0270	Labor Grounds Maintenance	60-72" MOWING SYSTEM	
at mowing height- Non-Growing			TRIM	2-4"	1.1.3	600	72.60	6.00	435.60	0.0227	Labor Grounds Maintenance	ECHO TRIMMER	
1 TIME PER YEAR- EARLY FALL	181	Acres	AERATION	soil plugs at a minimum of 4 inches deep and 2-3 inches apart.	1.1.8.2	8	22.63	1.00	22.63	0.0012	TRACTOR	John Deere	Rental of Aerator Impliant
Debris clean up from storms and debris cleanup from Air Shows, etc. NON GROWING	2	EA	EMERGENCY & SPECIAL EVENTS NO LINE ITEM, WO issued	8HR EVENTS	1.8.2	1	8.00	2.00	16.00	0.0008	Labor	Truck, Bags, Hand Tools, Chain Saws	Storm debris and Air Shows events most likely
Rotary mowing system is acceptable. Falcon Field is one Baseball Stadium- Estimating 6 Fields for service NON GROWING	22	Acres	BALL FIELDS NO LINE ITEM	Improved	1.8.6	1	22.00	6.00	132.00	0.0069	Labor Grounds Maintenance	60-72" MOWING SYSTEM	
Improved Edging NON GROWING	37,000	LF	EDGE	1/2" FROM EDGE	1.1.2	1000	37.00	6.00	222.00	0.0116	Labor Grounds Maintenance	ECHO STICK EDGER	

FORT HOOD GROUNDS MAINTENANCE SERVICE
RFP # W91151-19-R-0005

Debris Removal and Grounds Policing	90	Acres	Police Trash	Daily	1.1.6	0.08	7.20	260.00	1872.00	0.0977	Labor Grounds Maintenance	Bags, Vehicle	Dedicated Labor
Mostly evergreen (Live Oak and Palms)	5	days	LEAF REMOVAL	5 DAYS FROM WORK ORDER	1.1.7	10	0.20	5.00	200.00	0.0104	Tractor and Labor Grounds Maintenance	John deere and labor	
FERTILIZATION	181	Acres	FERTILIZATION	WORK ORDER	1.1.8.1	12	15.08	2.00	30.16	0.0016	TRACTOR	John deere and Exmark and labor	\$32 PER ACRE COST
Only if Contractor damaged - otherwise ordered	ESTIMATE D	SF	LAWN RENOVATION	SOD	1.1.10	0	0.00	5.00	22.50	0.0012	Labor Grounds Maintenance	Labor	NONE ANTICIPATED, lease equipment possible
Keep in mind the Clearance requirements for Safety. No count on trim units	2500	MINUTE	PRUNE SHRUBS	Shrubs, plants, hedges, and ground cover/vines shall be pruned/trimmed 3 inches away from buildings, fences, curbing, sidewalks, and other fixed obstacles.	1.1.11	1	41.67	6.00	250.02	0.0130	Labor	Hedge Trimmer	Reference Safety Clearance requirement also in Technical
Semi-improved Grounds Mowing Growing	824	Acres	MOWING	4-10" HEIGHT	1.2.1	10	82.40	20.00	1648.00	0.0860	Tractor	Tractor, 15' Batwing	
PERIMETER FENCE GROWING	175000	LF	PERIMETER FENCE	4-10" HEIGHT	1.2.3	0.02	58.33	2.00	116.66	0.0061	Labor Grounds Maintenance	ECHO TRIMMER	CHEMICALS WILL ELIMINATE TRIM HOURS
OLD HISTORIC CEMETERY	SMALL BUT HISTORIC		CEMETERIES, APPDX G ONLY	4-10" HEIGHT	1.2.4				12.00	0.0006	Labor Grounds Maintenance	ECHO TRIMMER	ESTIMATED-SMALL AREA FIND ONLINE
Semi-improved Grounds Mowing Non-Growing	824		TRIM	4-10" HEIGHT	1.2.2	10	82.40	4.00	329.60	0.0172	Labor Grounds	ECHO TRIMMER	

FORT HOOD GROUNDS MAINTENANCE SERVICE
RFP # W91151-19-R-0005

											Maintenanc e		
PERIMETER FENCE NON GROWING	175000	LF	PERIMETER FENCE	4-10" HEIGHT	1.23	0.02	58.33	1.00	58.33	0.0030	Labor Grounds Maintenanc e	ECHO TRIMME R	CHEMICALS WILL ELIMINATE TRIM HOURS
EOD RANGE DISKING NO LINE ITEM	11	ACRES	EOD RANGE DISKING NO LINE ITEM	3x/yr	1.8.5	0.75	8.25	3.00	24.75	0.0013	Tractor	Disc	Impliment Rental
BASH- 7-14" height GROWING	1844	Acres	MOW	7-14" HEIGHT	1.3.1	12	153.6 7	17.00	2612.3 9	0.1363	Tractor	Tractor, 15' Batwing	
10ft wide path 4-6" height around airfield (204720lf) GROWING	5	Acres	AIRFIELD CLEAR ZONES	4-6" Height	1.3.2	2	2.50	17.00	42.50	0.0022	Labor Grounds Maintenanc e	60-72" MOWING SYSTEM	Global Air NAV Data Measurements
GROWING	ESTIMATE D		AIRFILED LIGHTS	4-6" Height	1.3.3				12.00	0.0006	Labor Grounds Maintenanc e	ECHO TRIMME R	TWO DAY WORKLOAD
BASH- 7-14" height NON GROWING	1844	Acres	MOW	7-14" HEIGHT	1.3.1	12	153.6 7	4.00	614.68	0.0321	Tractor	Tractor, 15' Batwing	
10ft wide path 4-6" height around airfield (204720lf) NON GROWING	5	Acres	AIRFIELD CLEAR ZONES	4-6" Height	1.3.2	2	2.50	4.00	10.00	0.0005	Labor Grounds Maintenanc e	60-72" MOWING SYSTEM	Global Air NAV Data Measurements
NON GROWING	ESTIMATE D		AIRFILED LIGHTS	4-6" Height	1.3.3				12.00	0.0006	Labor Grounds Maintenanc e	ECHO TRIMME R	TWO DAY WORKLOAD
Unimproved Grounds Mowing, 1x per year mowing	64	Acres	Prevent Woody encroachment	14" NTE	1.4	2.5	25.60	1.00	25.60	0.0013	Tractor	8ft Heavy Rough Cut	Rental
2x per month weed free, Flowerbeds are authorized at installation main entrances and installation headquarters (I.E. wing HQ. numbered AF and MAJCOM HQ). All other beds are locally funded.	2	EA	BEDS	Hrs per service	1.5	6	12.00	2.00	24.00	0.0013	Labor	Mechanic al extraction	
Surface Drainage Ditch Maintenance	15,235	LF	WORK ORDER	4X/YR EST	1.6	0.01	152.3 5	4.00	609.40	0.0318	Labor Grounds Maintenanc e	TRIMME R	32CC STANDARD TRIMMERS 38CC MAX

FORT HOOD GROUNDS MAINTENANCE SERVICE
RFP # W91151-19-R-0005

Emergency Tree Pruning	800	EA	WORK ORDER		1.8.1.3				800.00	0.0417	Labor Grounds Maintenance		\$35 PER TREE/ Normal cost \$75 per tree
Emergency Tree and Stump Removal LARGE	20	EA	WORK ORDER		1.8.1.5, 1.8.1.6			4.00	80.00	0.0042	Labor Grounds Maintenance		\$375.00
Emergency Tree and Stump Removal MEDIUM	50	EA	WORK ORDER		1.8.1.5, 1.8.1.6			3.00	150.00	0.0078	Labor Grounds Maintenance		\$275.00
Emergency Tree and Stump Removal SMALL	50	EA	WORK ORDER		1.8.1.5, 1.8.1.6			1.50	75.00	0.0039	Labor Grounds Maintenance		\$115.00
Special Cuts	90	Acres	5 a year EST	2-4"	1.8.4	2.5	36.00	5.00	180.00	0.0094	Labor Grounds Maintenance	60-72" MOWING SYSTEM	
Shrub Removal/Replacement/ PLANTING TREES SHRUBS AND VEG BEDS	200	EA	? WORK ORDER QUESTION - NO CRITERIA		1.5 AND OTHER S			1.50	300.00	0.0157	LABOR, TRACTOR		\$35.50

FORT HOOD GROUNDS MAINTENANCE SERVICE
RFP # W91151-19-R-0005

BIO AS FOUND AT MSBLOTTIE.COM (2017)

MARK S. BLOTTIE

Mark brings over 45 years of work and database documents to include over 30 years' experience in Contract Law education and practical application. (over 8000 Federal proposals completed)

Mr. Blottie started his work with the Government in the early 1970's with two years of college under his belt providing services as a representative through the US State Department, DIA and the CIA as a Card-Carrying US Diplomat from 1974 through 1978. He continued his service as a US Army Soldier from 1979 to 1998 (4 Year Degree issued) quickly becoming a Very Senior Intelligence Analyst and Procurement Adviser for Army and Joint Service Special Operations Worldwide, including extensive work with the National Security Agency [1] (Defense Special Missiles and Astronautics Center Senior Analyst and Educator), VII Corps Europe, The NATO Commander. In the last major wartime assignment Mark was a senior intelligence analyst to the Central Command Commander (Schwarzkopf), for Operations Desert Shield and Desert Storm along with direct daily support to the Saudi Ministry of Defense and Military Command Structure.

Mr. Blottie is the recipient of many meritorious military awards for service during the Cold War and Desert Storm including the Bronze Star, for outstanding service in training 100's of personnel along with his unique work in a battle field environment. He specifically provided superior training, guidance, and reporting to the National Level, his work ethic on a larger Team resulted in comprehensive service use of all Countries Space and Aviation assets along with the development and procedure to destroy Iraqi surface-to-surface missile batteries. We provided direct intelligence analysis, critical and required at the surrender table, for the release of prisoners of war that the Iraqi Government was not intent on acknowledging.

Leaving the service in 1998, having combined his reserve status service with working directly with both the Civil Engineering Section (Prime Beef) on Patrick AFB Florida, 45th Space Wing from 1992 through 1993 this provided direct experience in all Base Public Works Operations in support of the USAF Space Command Operations.

In 1993 Mr. Blottie signed on and started working as both Quality and General Manager for multiple private contractors who serviced the grounds along with various service and construction projects on Charleston AFB, Patrick AFB and Cape Canaveral Air Station in support of the Air Force Space Command. He was a member of the National Association of Quality Control Professionals during this period (1993-1998) and provided both physical Project Management as well as total simultaneous procurement support during this period.

In late 1998 Mr. Blottie opened a private consulting company under his name and started a number of internet ventures to provide consulting and procurement services to clients. From late 1998 through today Mr. Blottie has, and continues to, provide support with comprehensive proposal and business consulting service to over 160 US and Foreign Clients and is providing up to 100 proposals and 1000 business contract transactions a year for the past 17 years in the service and technical fields, all resulting in over 7 billion client Firm Fixed Price win dollars and employment for over 8900 personnel.

FORT HOOD GROUNDS MAINTENANCE SERVICE

RFP # W91151-19-R-0005

Proposal wins have included numerous GSA Schedule Contracts, Medical, O&M, Custodial, Grounds Services, Food Service, Construction, DLA Logistics, Vehicle Maintenance, Housing Maintenance, HR Staffing Support, in fact, all aspects of the Federal and Commercial Service Industry available has been the key to the company's continued excellent performance for all clients. Work has included support in rebuilding all areas impacted by hurricane Katrina. His largest single Federal award is for over 350 million dollars, with the remainder of awards since 1999 being 1/2 million to 115 million-dollar contracts for his clients.

The last few years (through today) have been spent in continued support to both the business client along with providing senior pricing team management and specialized analysis for select Federal Agencies. Work includes numerous major procurement efforts for major clients in General Site Services, Specialized Site Services (Fuel and Fuel Depots), O&M, Security, Classified Operations, etc. Often these services are provided as a critical member of a comprehensive proposal team, However, continued support is dedicated to the many small business companies that make up the majority of the procurement market and is provided by Mark as a dedicated small procurement company (One-On-One until the Job is Done).

Education in Brief:

(Bachelor of Science and Advanced work in Classified Space Based Operations and Communications)
321-698-5314 • www.msblottie.com • msblottie@gmail.com

SAMS Registered Office:

Mark S. Blottie

7777 N. Wickham Rd. Ste 12-504

Melbourne, Florida 32940

Hourly and Fixed Projects Rates available through written contracts.

Customer Reference Available.